

MS-50G

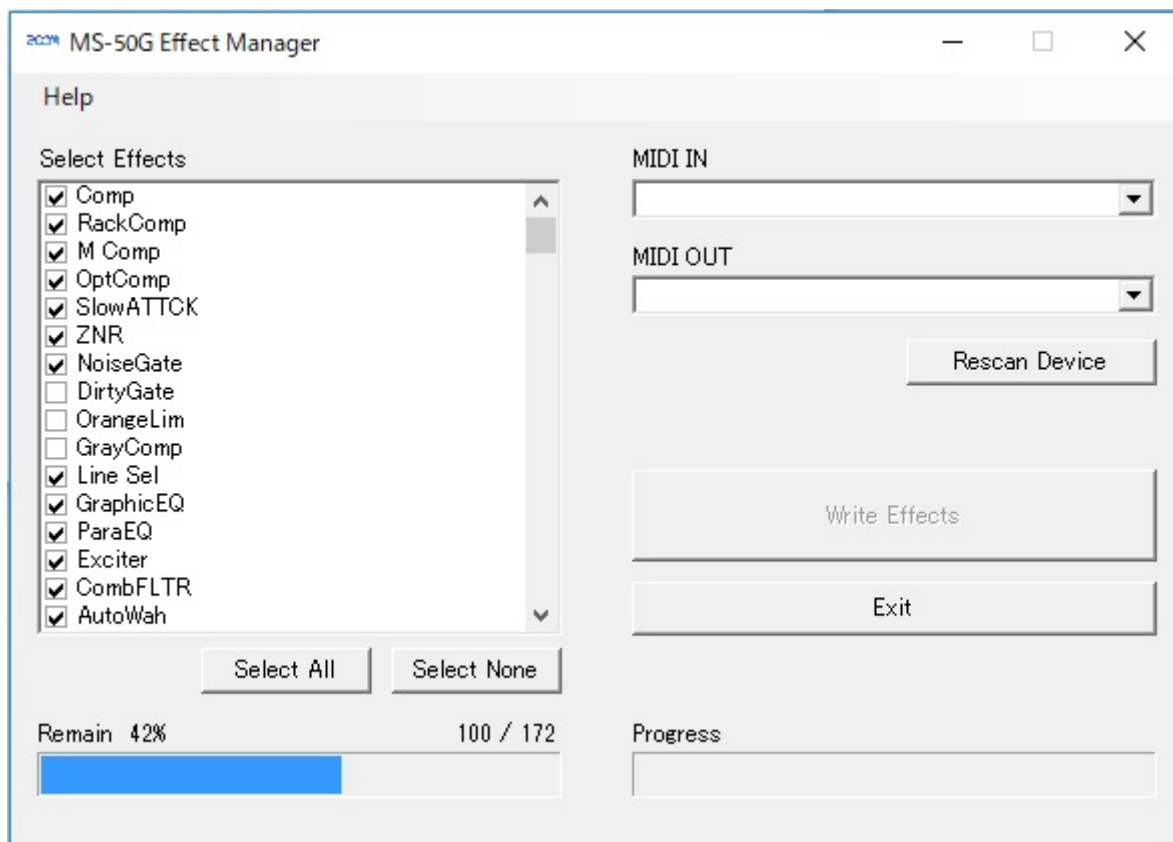
Issues and workarounds in MS-50G Effect Manager app

March, 2019

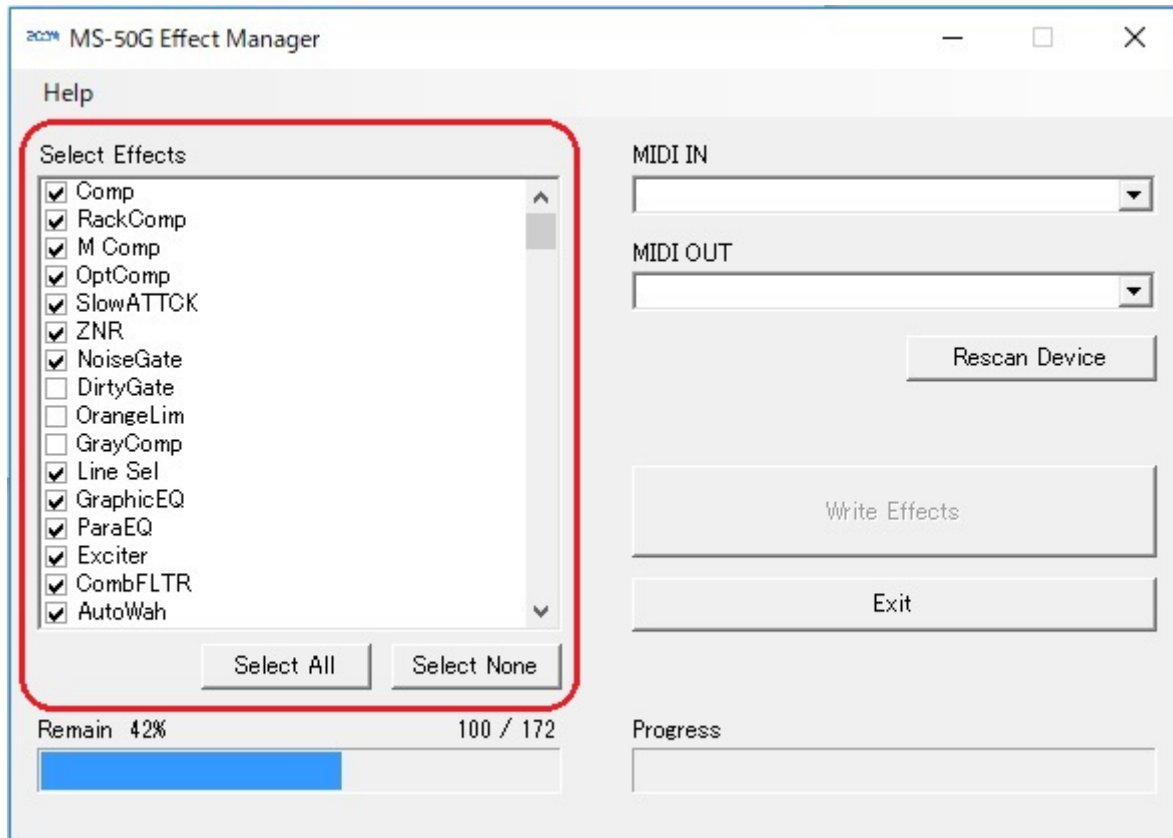
A problem sometimes occurs where effects cannot be loaded to MS-50G due to timeout error when using MS-50G Effect Manager app on Windows PC.

When you experience this problem, the following workaround may be effective:

1. Launch MS-50G Effect Manager app after confirming MS-50G is not connected to PC.

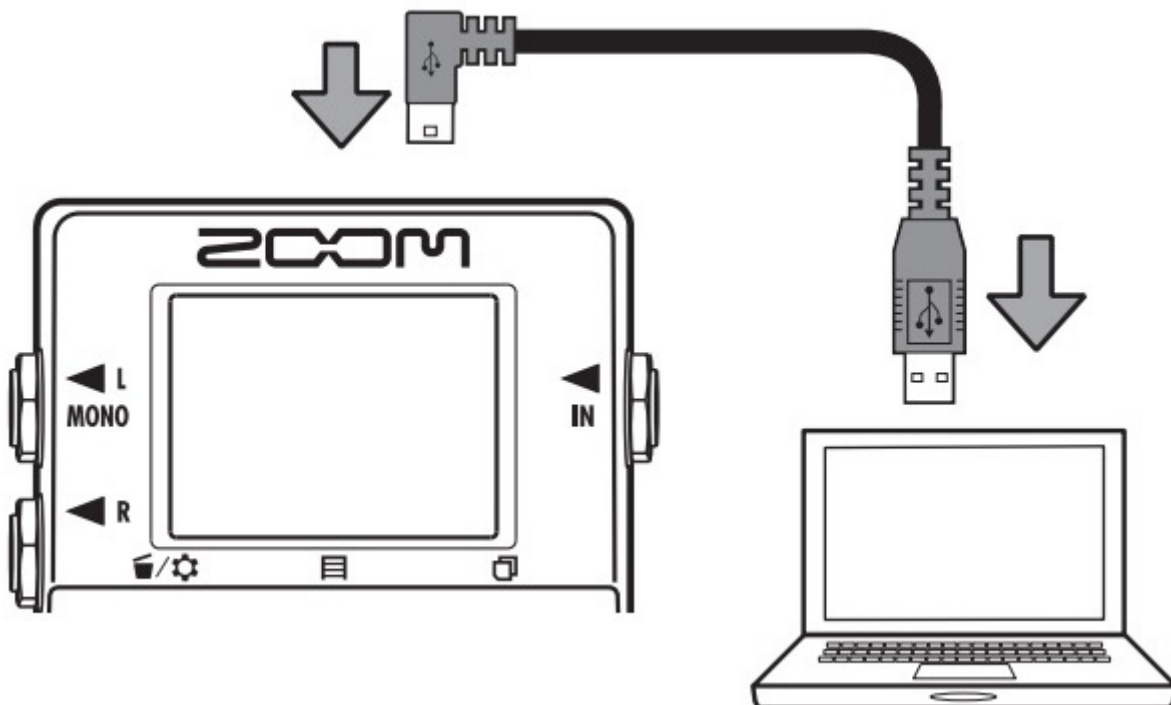


2. Select the items to transfer in the "Select Effects" column.

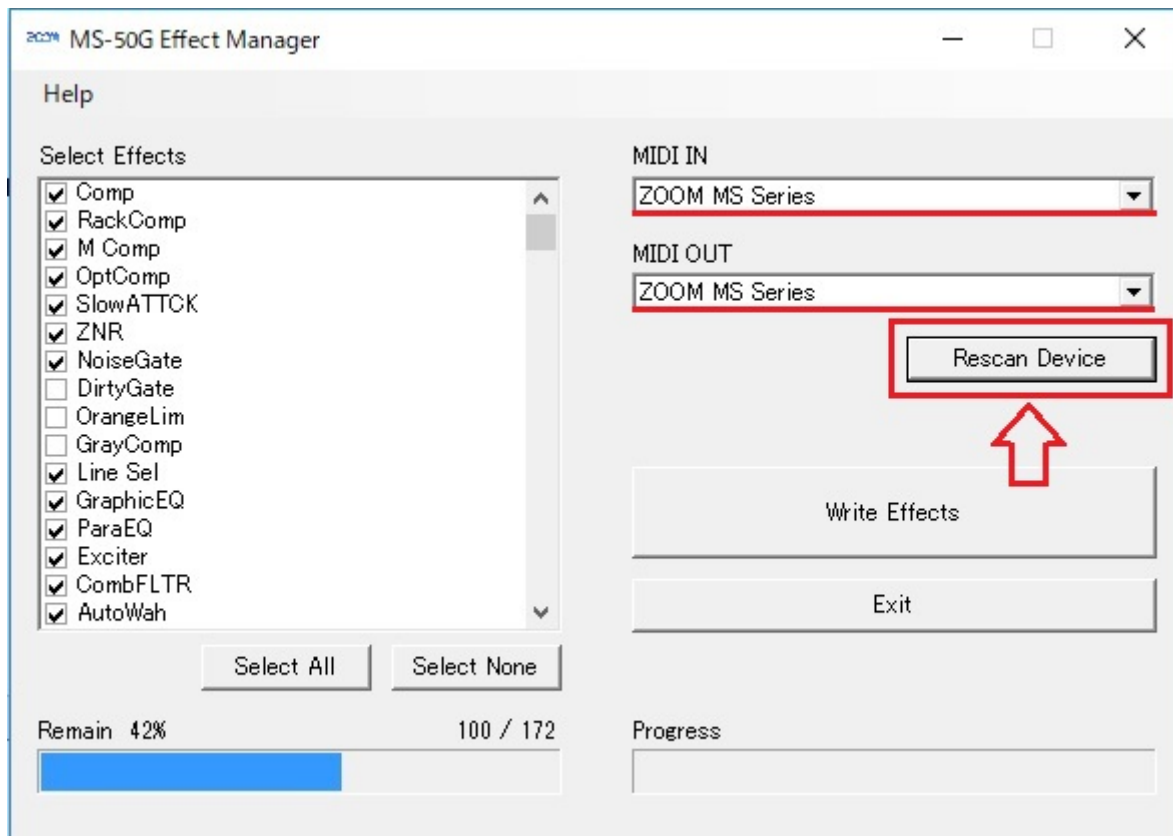


3. Connect MS-50G and Windows PC.

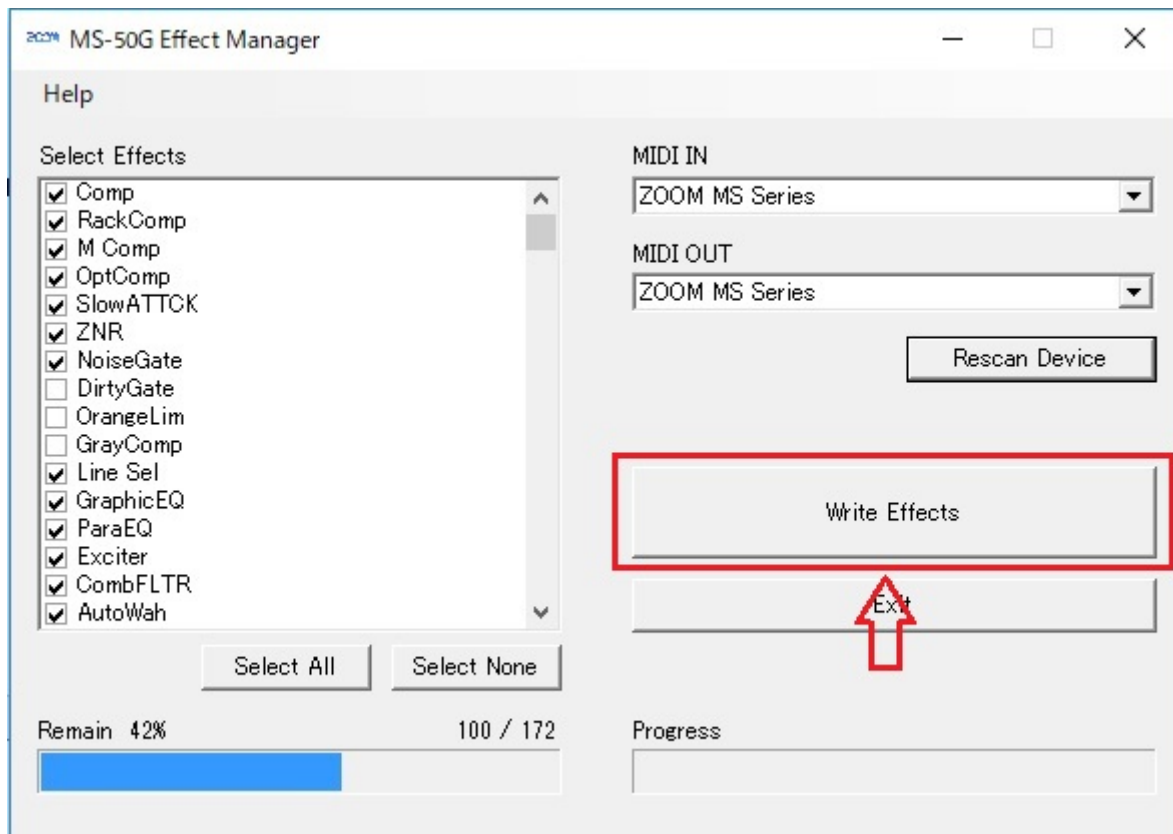
***When MS-50G turns on, finish Steps 4 & 5 quickly. (approximately within 30 seconds.)**



4. Click the [Rescan Device], confirm that “ZOOM MS Series” is shown in both the MIDI IN and MIDI OUT fields.

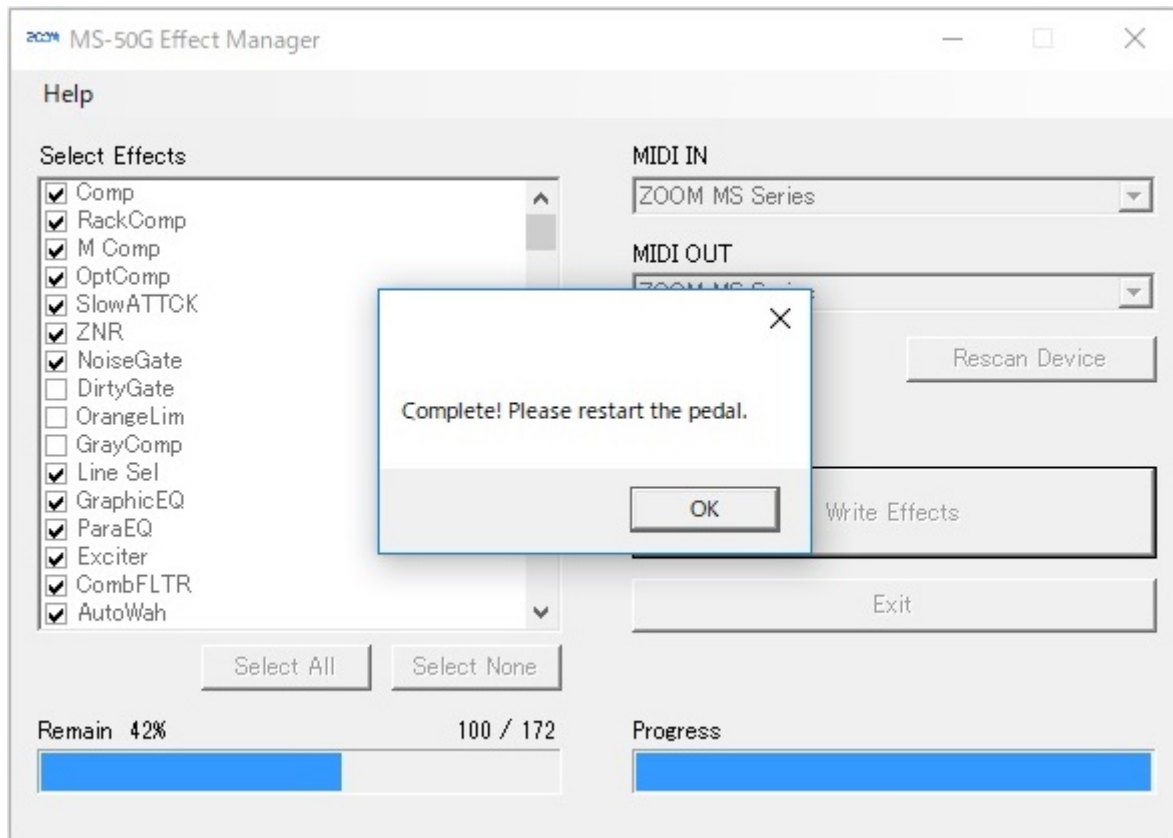


5. Click the [Write Effects] button to load (write) the selected effects.



***Do not disconnect the USB cable while effects are being loaded.**

6. When loading effects completes, the following will appear.



Click the [OK] button and [Exit] button to close the MS-50G Effect Manager.
Then, turn the MS-50G power off.

***If the error still occurs, please try again from Step 1.**

We apologize for any inconvenience.